



TOURMALINE



Tourmaline not only shows every hue of the rainbow, but also an incredible range of color saturations and tones - from electric blues and greens to rich reds and pinks. Tourmaline has one of the widest color ranges of any gem.

TOURMALINE - COLOR

With all the amazing colors of tourmaline there is a color for every preference. While saturated colors are in demand, less saturated colors have become popular. Some tourmalines are bi-colored and parti-colored, exhibiting two or more colors in a single gem.



TIPS AND ADVICE

THERE'S A TOURMALINE IN YOUR FAVORITE COLOR.

Tourmalines in bright and muted colors span the spectrum. This gem is also perfect for those who like color combinations, with bicolor and tricolor gems.

FIND A JEWELER WHO CAN SHOW YOU A VARIETY OF TOURMALINE.

Jewelers who know and love gemstones have a range of tourmaline colors available to show you.

DON'T COMPROMISE ON CUT.

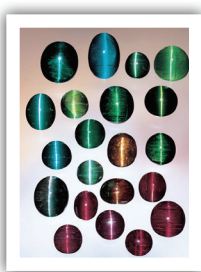
The quality of the cut can make a big difference in beauty. Your tourmaline should reflect light back evenly across the entire gem. Poorly cut gems are much less marketable and sell at a discount..

CARING FOR TOURMALINE.

Tourmaline is 7-7.5 on the hardness scale and has fair toughness. Never expose to high heat as it may alter the color. Sudden temperature changes may cause fracturing. Because of this, clean your tourmaline with mild soapy water and a soft brush.

TOURMALINE - CLARITY

Tourmaline often grows in an environment rich in liquids, which can capture inclusions during crystal formation. The most typical inclusions resemble thread-like cavities parallel to the length of the crystal. If cut as a cabochon, they may cause a cat's eye effect.

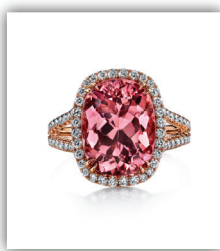


TOURMALINE - CUT

While tourmaline is often cut in long rectangles to accentuate the gemstone's pleochroism (the display of different bodycolors from different viewing directions), many cutters orient a fashioned gem based on its depth of color. To make the color of the cut stone appear darker, they orient a gem's table perpendicular to the crystal's length. To make the color of the cut stone appear lighter, they orient a gem's table parallel to the crystal's length.

TOURMALINE - CARAT WEIGHT

Depending on the color and quality, fashioned tourmalines in larger sizes often rise considerably in per-carat price. Even though specimens can reach spectacular sizes, these are rare. Availability drops and prices rise sharply for facet-quality rough material.



FAQ

Q: WHAT TOURMALINE COLOR IS BEST?

A: Bright pure tones of red, blue and green are generally the most desirable but the vivid green to blue shades of copper-bearing tourmaline (in the trade this color is often referred to as Paraiba) are so exceptional that they are in a class by themselves.

Q: DO I HAVE TO WORRY ABOUT TOURMALINE TREATMENTS?

A: Fortunately most tourmaline is not routinely treated. However, certain colors (pink in particular and also yellow) can be caused by irradiation. Another notable exception is the Paraiba-type material from Africa, which is often heated.

Q: IS TOURMALINE FROM PARAÍBA, BRAZIL, WORTH MORE?

A: Every locality produces a wide range of quality. The fact that a tourmaline comes from a famous gem producing area doesn't mean it is good quality. But fine quality tourmalines that have documentation of their Brazilian origin from an independent laboratory like GIA command a premium.

Q: DOES GIA GRADE TOURMALINES?

A: GIA doesn't grade tourmalines. GIA Gemological Identification Reports assess the characteristics of a mounted or loose tourmaline (weight, measurements, shape, cutting style and color), indicate any detectable treatments, and give an opinion on geographic origin, when it is possible to establish.

GIA exists to connect people to the understanding of gems. As a long-standing scientific authority, GIA is not only a unique source for gem knowledge, its grading reports inspire confidence wherever they appear.

For more information on GIA visit: www.4Cs.gia.edu

